



GMT Constitutional Area 5 - K, Group L

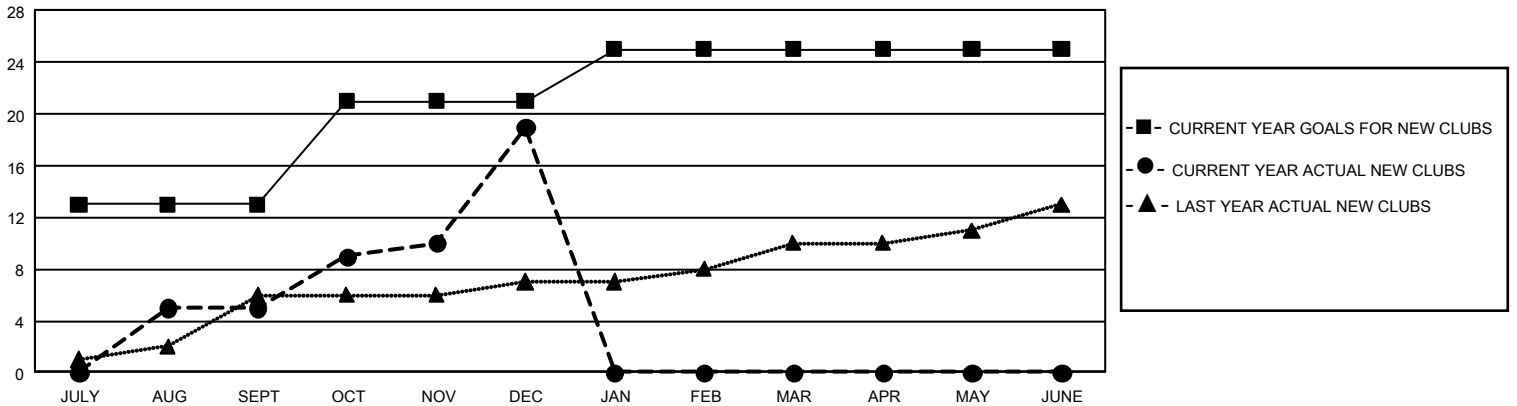
GMT: OPEN

REPORT DOES NOT INCLUDE CLUBS IN UNDISTRICTED AREAS.

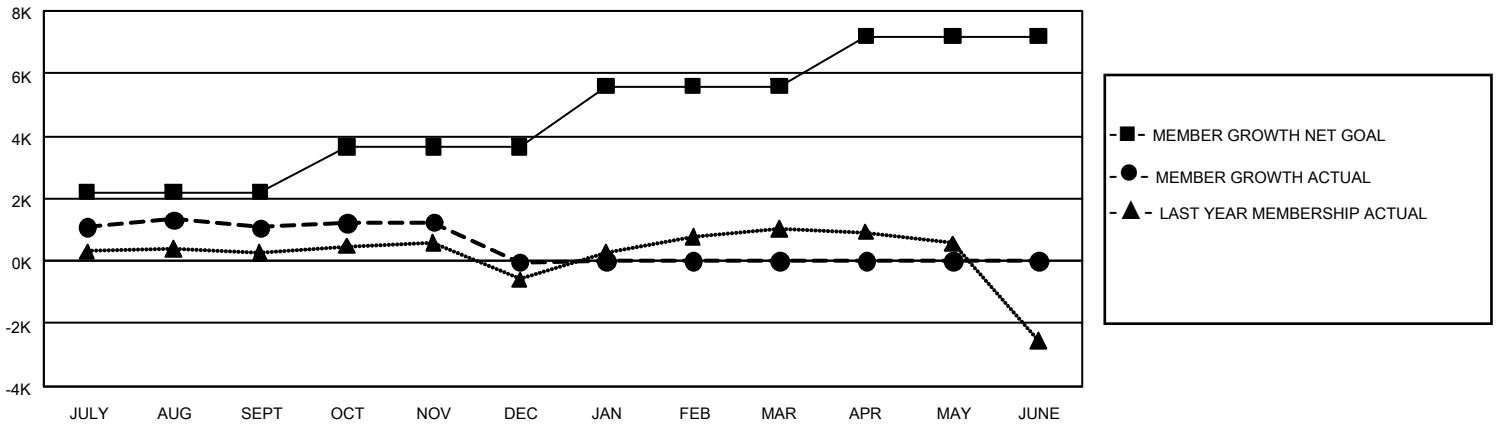
Clubs			
RESULTS FOR 2019-2020			
QUARTER	NEW CLUB GOAL	NEW CLUBS	DROPPED CLUBS
JULY/AUG/SEPT	39	5	3
OCT/NOV/DEC	24	14	1
JAN/FEB/MAR	12	0	0
APR/MAY/JUNE	0	0	0

Members			
RESULTS FOR 2019-2020			
QUARTER	MEMBER GROWTH NET GOAL	MEMBER GROWTH ACTUAL	DROPPED MEMBERS ACTUAL (including transfers)
JULY/AUG/SEPT	6,630	2,781	1,620
OCT/NOV/DEC	4,350	2,008	3,073
JAN/FEB/MAR	5,820	0	0
APR/MAY/JUNE	4,770	0	0

GOALS AND ACTUAL NEW CLUBS CUMULATIVE



GOALS AND ACTUAL MEMBERS CUMULATIVE



DROPPED CLUBS: 4	813 CLUBS OF 1,071 ADDED 1 OR MORE NEW MEMBERS	GENDER DISTRIBUTION	
		MALE 35,190 (72.10%)	FEMALE 13,618 (27.90%)
DROPPED MEMBERS		TOTAL FAMILY UNIT MEMBERS 5,239	
DECEASED 47	CLICK HERE FOR CUMULATIVE MEMBERSHIP DATA	FAMILY MEMBERS PAYING HALF DUES 3,106	
CLUB CANCELLED 0			
OTHER 4,646			
TOTAL 4,693			